

EXHIBITIONS AT A GLANCE: GLINT AT CANBERRA GLASSWORKS

JUL 30 2014

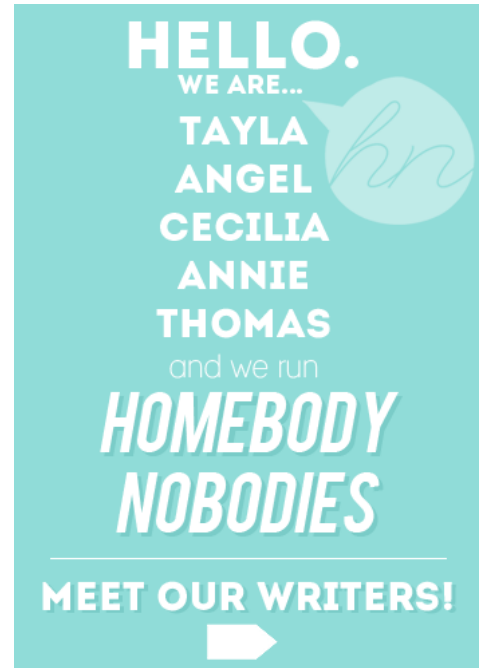
In the tiny city of Canberra, there is a Glassworks. Many people miss stopping by this unique tourist attraction, while they rush past to see the sights of Parliament and the masses of galleries and museums around Capital Hill, but Canberra Glassworks is definitely somewhere worth the stop – especially to see the current resident exhibition: *GLINT*.



GLINT is an exhibition that showcases the works (in forms of glass and print) of four printmakers and four glass artists that have worked together over two months in the studios of Megalo Print Studio and Canberra Glassworks. The exhibition includes experimental tests and shows the development of artworks, as well as the finished form. The artists experimented with different colours – natural dyes and manufactured pigments, with different ways of projecting images onto different mediums.

As you enter the exhibition, one of the first artworks to capture your attention is Ben Rak's works. Rak is a printmaker, but in this exhibition he has used glass as a medium through which he showcases his graphic skill and creative concepts.

Images of apartments and houses in Sydney are sandblasted onto clear glass blocks and sheets, symbolising the current fashion of living in "glass cubes" – open to public gaze. Some of his work is pictured below.



Search



Tweets

Follow



Homebody Nobodies

@homebodynobody

11h

look at our gal Annie playing some a nice game of cricket

pic.twitter.com/uNwvzPBVRX



Tweet to @homebodynobody



The standout work – which anyone who has been to the Glassworks will recognise – is of course, *Mushrooms* by Emilie Patteson (a Canberra glass artist) and Annika Romeyn (a print maker who studied Fine Arts in the United States). The two paired up as part of the artist-in-residency at Canberra Glassworks, and their thoughts and artistic values overlapped and fused together to form the incredible “magic mushroom” pieces. “*Mushrooms*” is inspired by a bunch of mushrooms initially found in a patch outside Megalo Print Studio, which captured both artists’ attention, and inevitably lead to the awe-inspiring glass works and prints, some of which are captured below.



Emilie Patteson and Annika Romeyn, *Mushrooms*

GLINT showcases the astonishing collaborative works of eight print and glass artists. The ones talked about above are only by three of the eight artists – if these interest you, you won’t believe how phenomenal the other pieces in the exhibition are! Go and check out the very modern, hands-on artworks at Canberra Glassworks before the 3rd of August 2014.

GLINT is on show at Canberra Glassworks from the 2nd of July 2014 until the 3rd of August 2014. For more information, visit canberraglassworks.com.

- Emma Sinn

Filed under: [emma sinn art](#)



1. clubdaisy likes this
2. fencesitterkid likes this
3. homebodynobodies posted this

0 Comments

homebodynobodies.com

Login

Sort by Best

Share Favorite

Start the discussion...

Be the first to comment.

Subscribe

Add Disqus to your site

Privacy

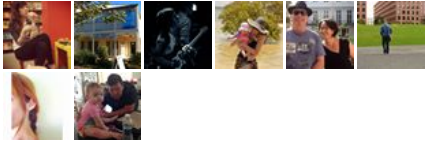
Find us on Facebook



Homebody Nobodies

Like

655 people like Homebody Nobodies.



Facebook social plugin